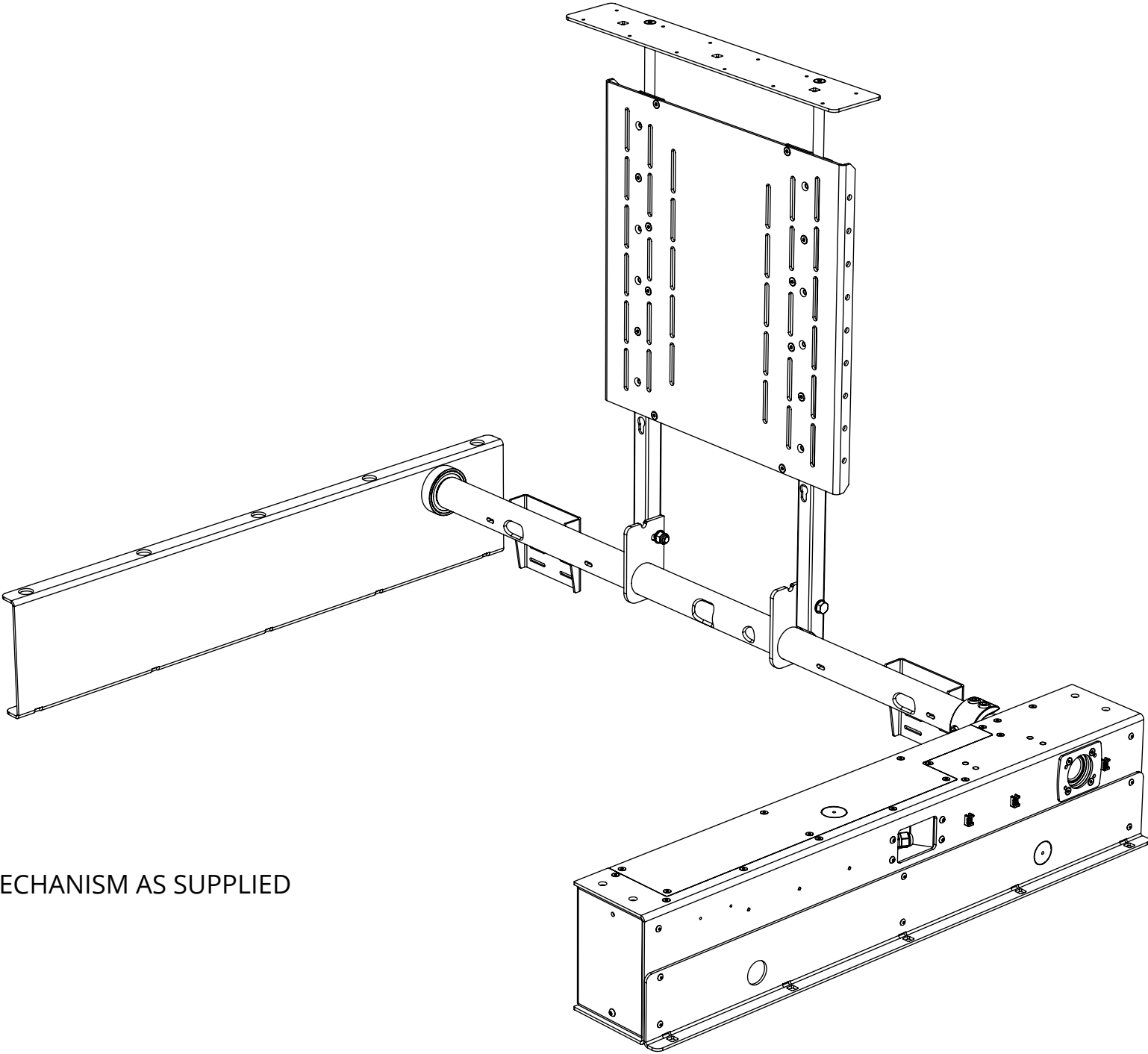
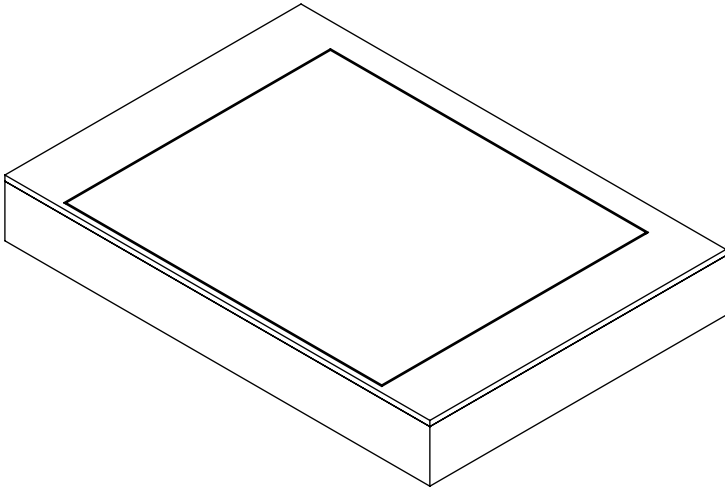
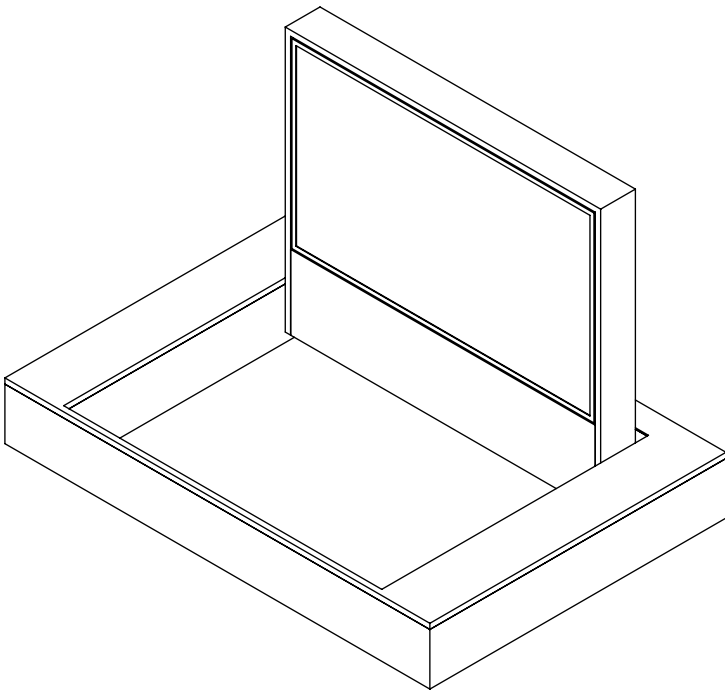


HU4

HINGE UP MECHANISM



MECHANISM AS SUPPLIED



HU4

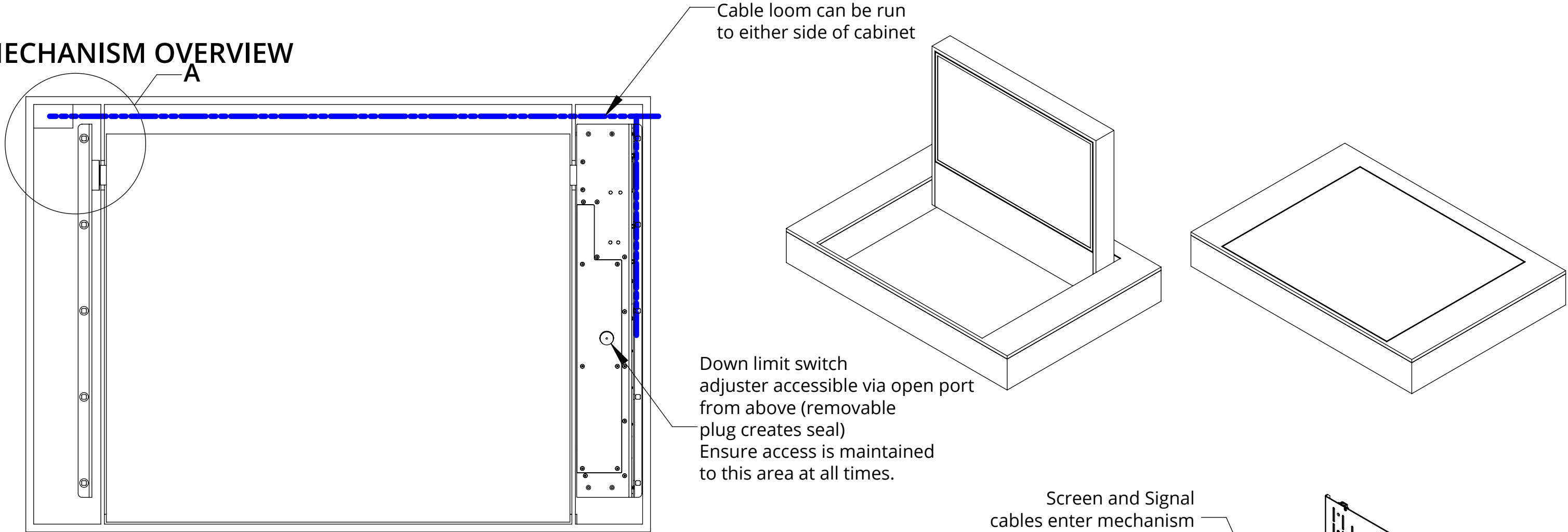
HINGE UP MECHANISM

SPECIFICATION	MEASUREMENTS
Product Dimensions	1435mm (56.5") W x 993mm (39.1") L x 190mm (7.5") H
Maximum Screen Size	1130mm (44.5") W x 680mm (26.8") L x 65mm (2.6") H
Maximum Weight Capacity	50Kg (110lb) INC CABINET WEIGHT
Product Weight	37Kg (81lb)
Maximum Rotation	90°
Movement Type	Motorised
Control System	Control box with 3m [10'] loom - can be customised to suit installation
Power Supply Required	110V - 240V AC
Power Consumption Max.	120W
Power Consumption Standby	3W
Mounting Patterns Supported	VESA 400, 300, 200 W x 400, 300, 200 H
Control Options	IR Remote, RS232, Contact Closure
Product Options / Features	Specific B&O and Loewe mounts / adapters, Custom RAL paint finishes, Marine suitable version
Package Contents	Mechanism, IR remote control
Marine Suitable	No

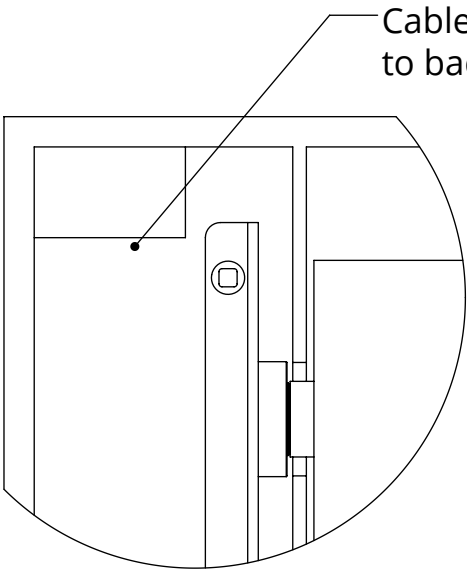
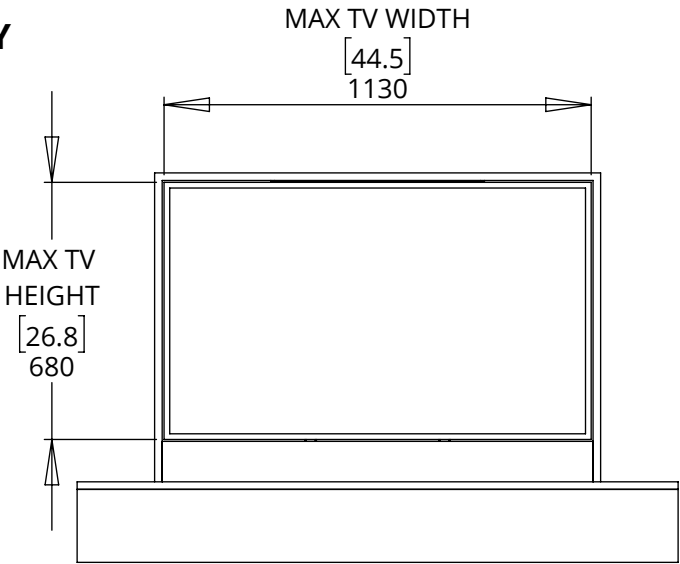
HU4

HINGE UP MECHANISM

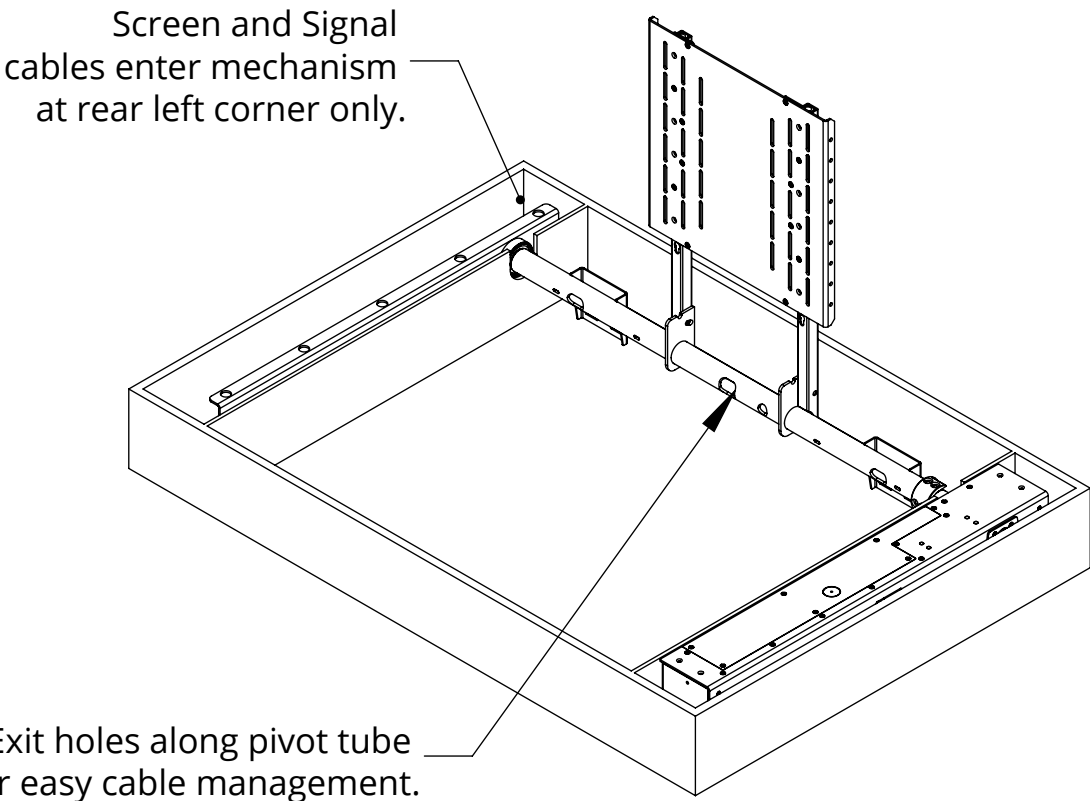
MECHANISM OVERVIEW



SCREEN CAPACITY

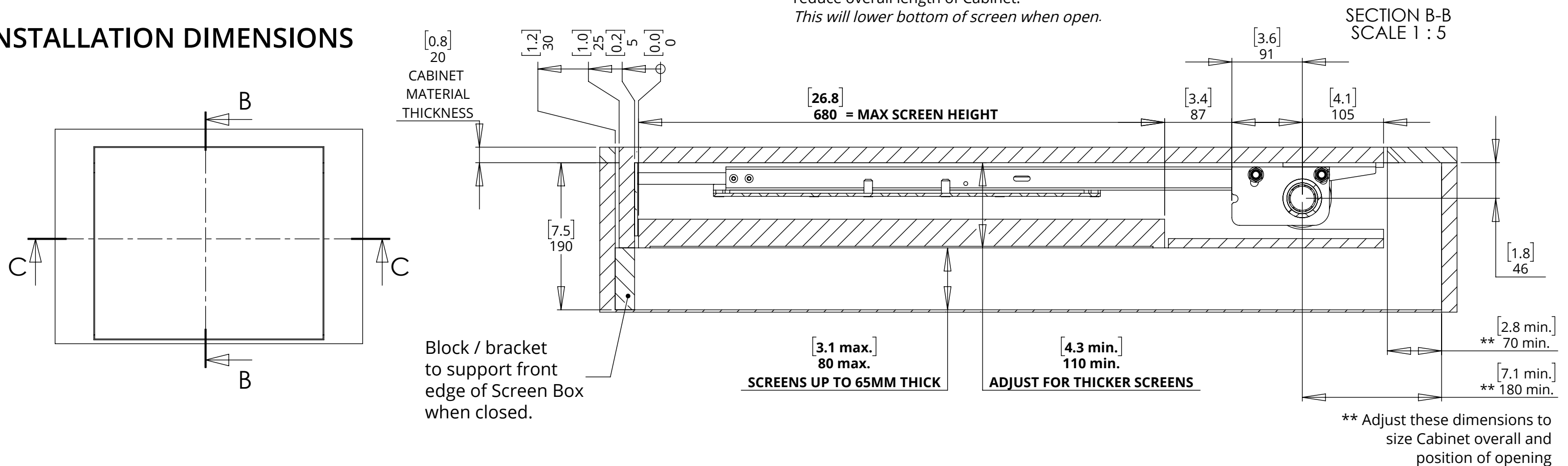


DETAIL A
SCALE 1 : 5



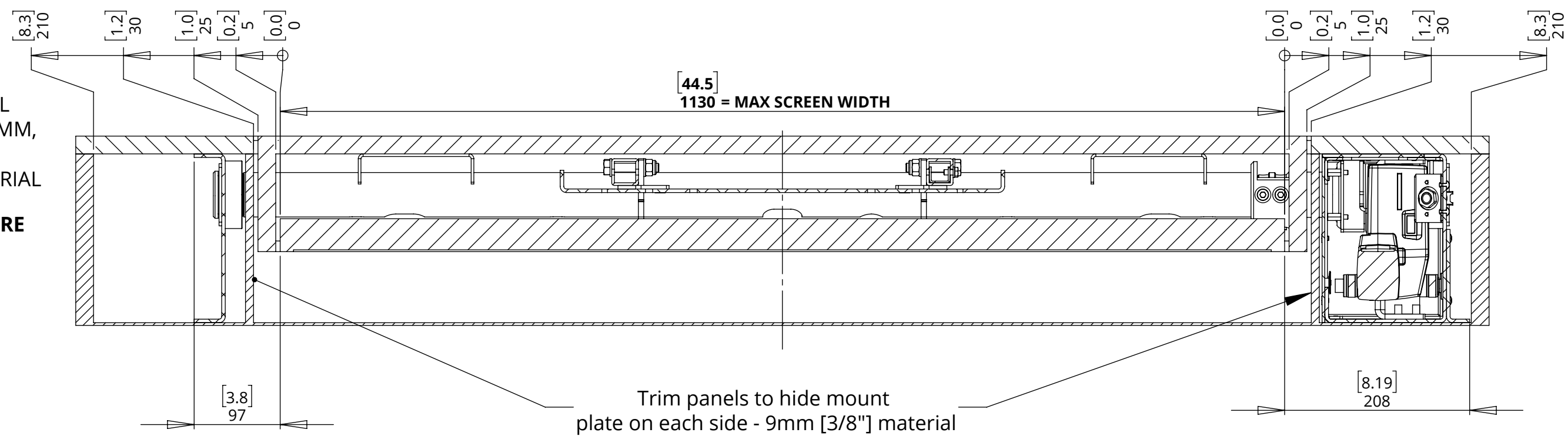
HU4 HINGE UP MECHANISM

INSTALLATION DIMENSIONS



NOTE : CABINET MATERIAL THICKNESS SHOWN IS 20MM, ADJUST DIMENSIONS TO SUIT DIFFERENT MATERIAL

DIMENSIONS SHOWN HERE FOR THE SMALLEST SYMMETRICAL CABINET



SECTION C-C
SCALE 1 : 5

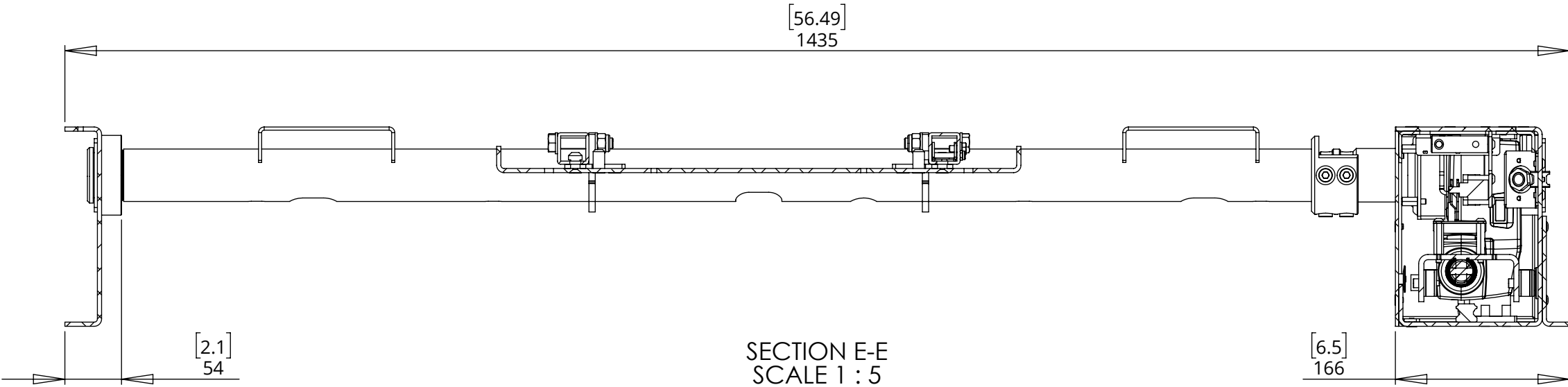
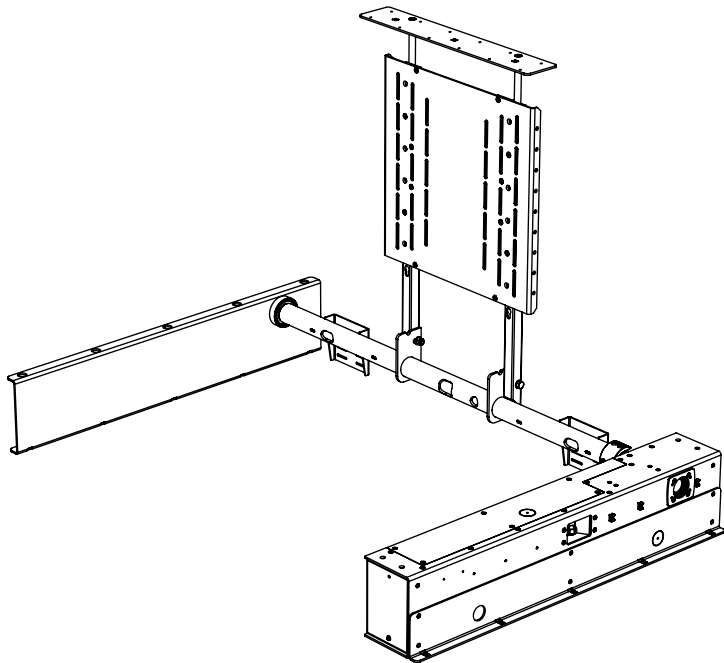
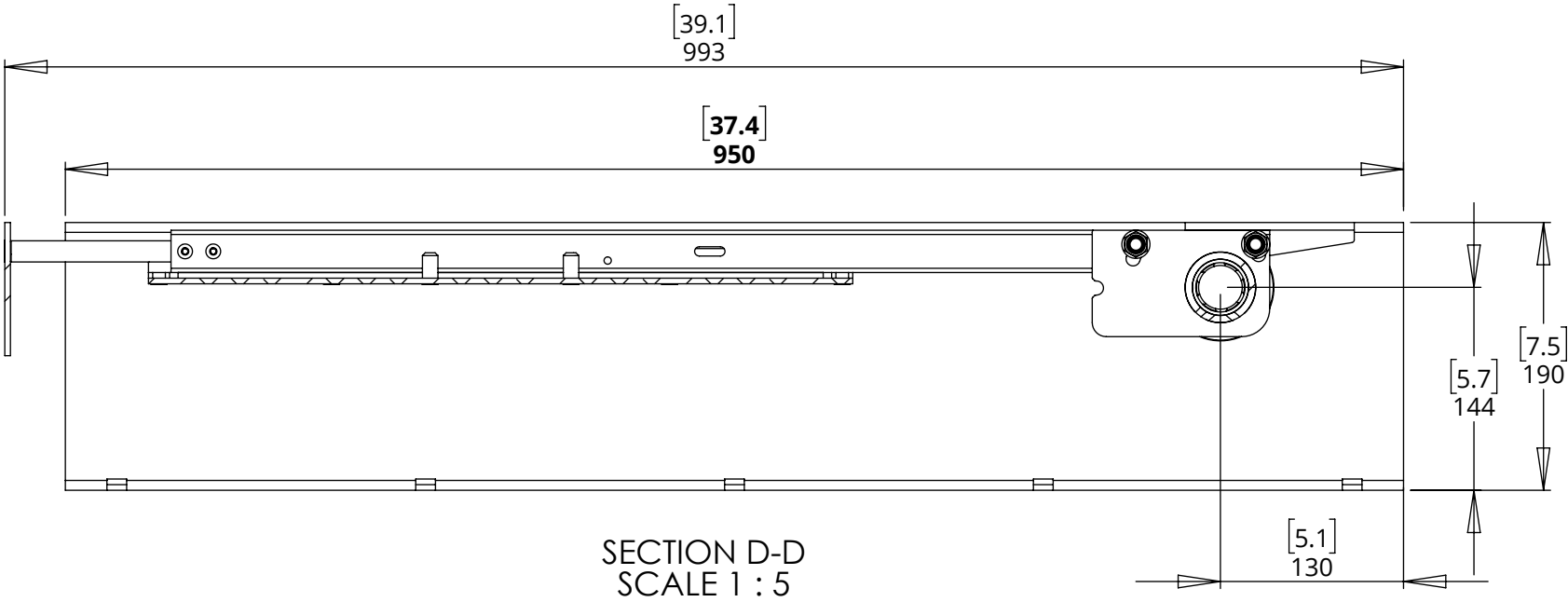
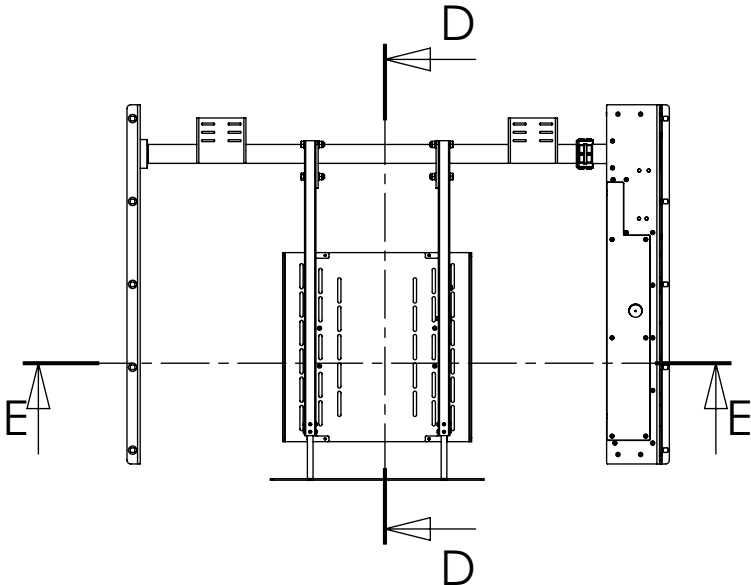
HU4

HINGE UP MECHANISM



future automation

MECHANISM DIMENSIONS

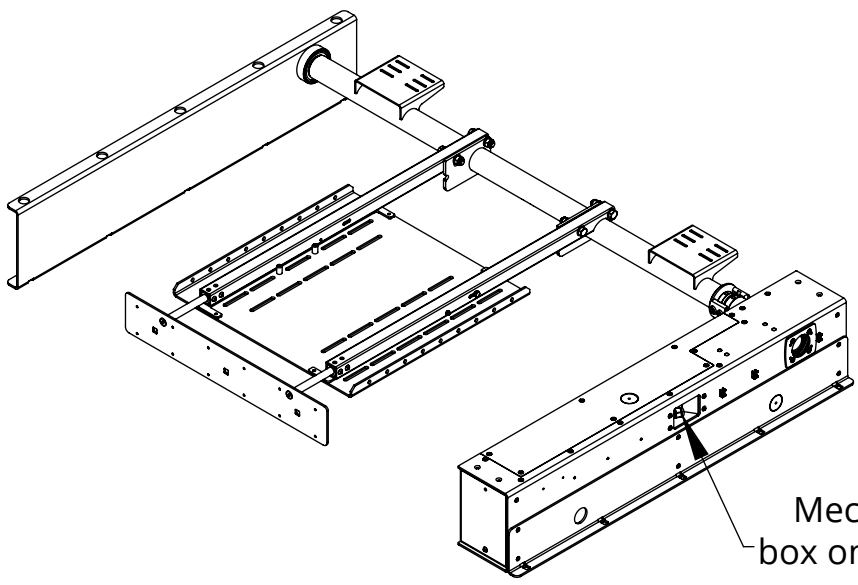


HU4

HINGE UP MECHANISM

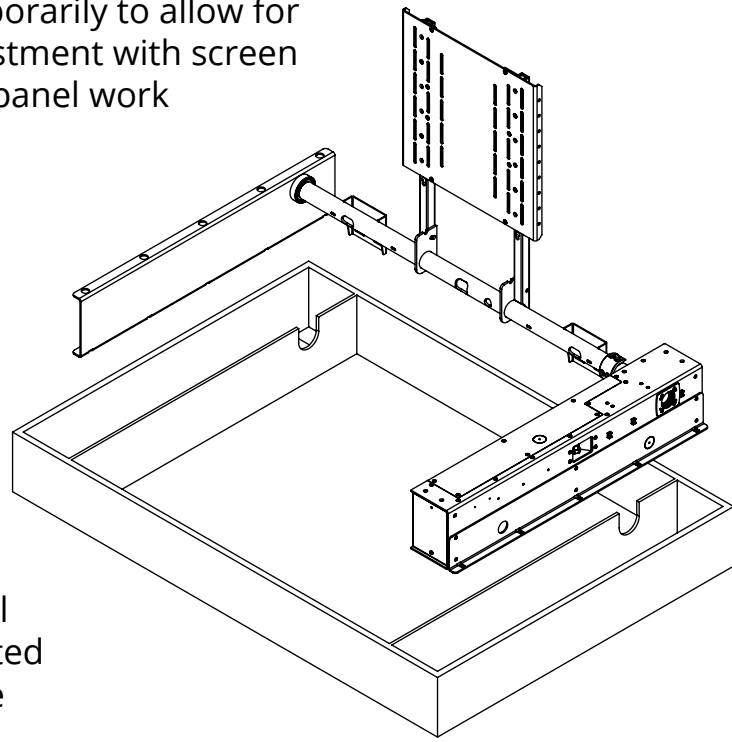
INSTALLATION

1. Power mechanism and test operation before installation.

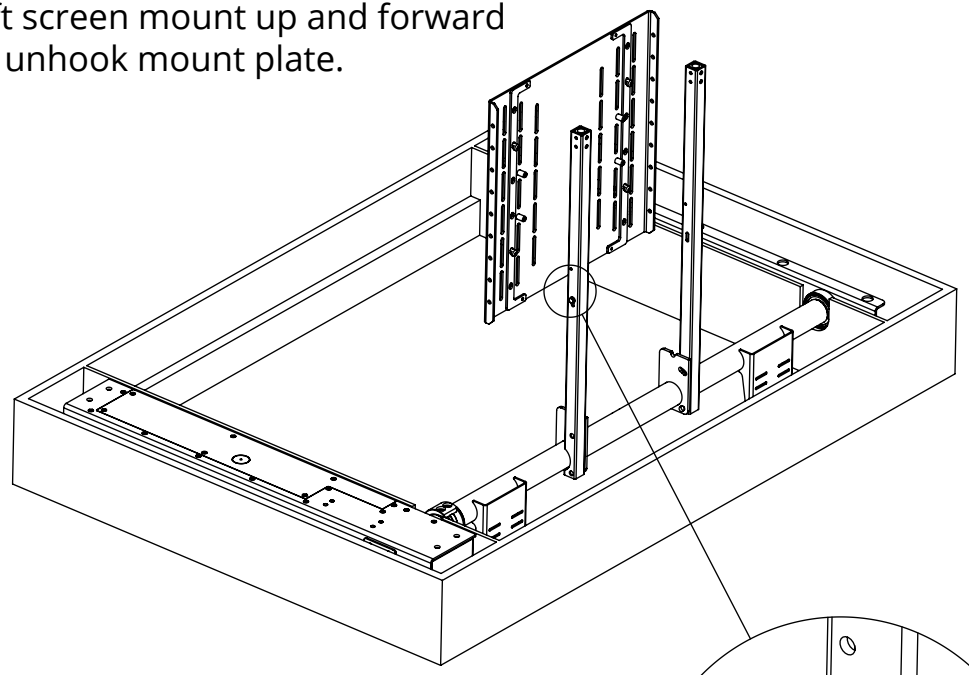


Mechanism control box on loom connected on right hand side

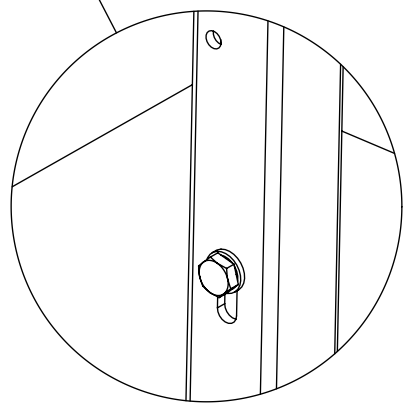
2. Lower mechanism into position in lower cabinet and secure temporarily to allow for adjustment with screen and panel work on.



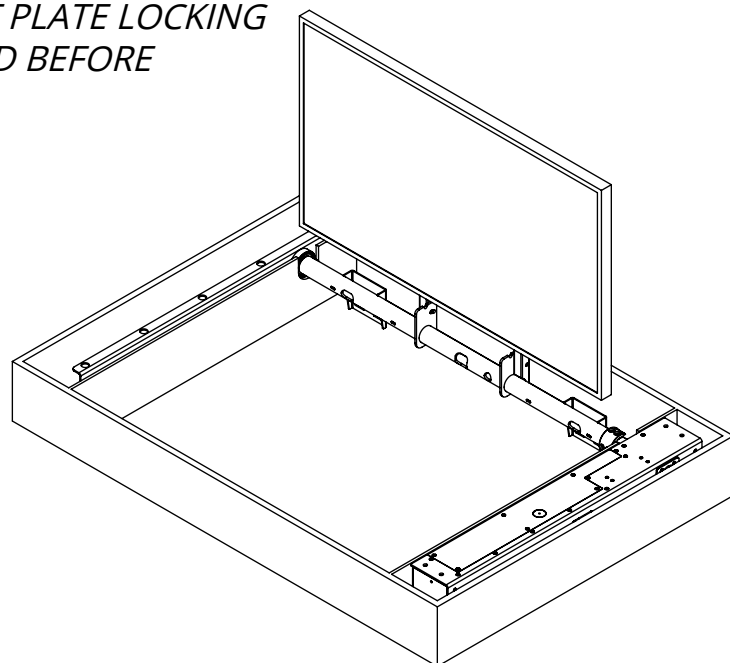
3. Loosen screen mount locking bolt on side of BOTH legs. Lift screen mount up and forward to unhook mount plate.



DETAIL F
SCALE 1 : 2

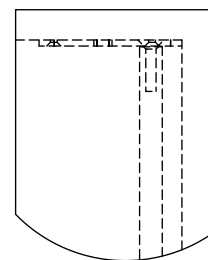
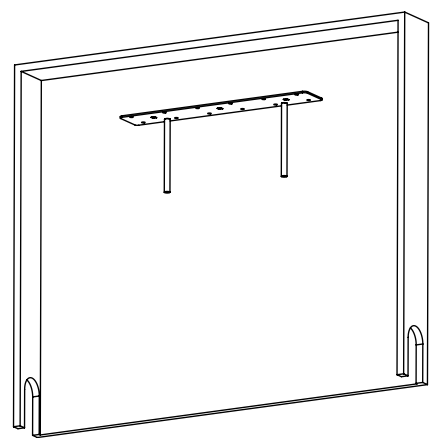


4. Install screen onto mount plate and install onto mechanism. *ENSURE MOUNT PLATE LOCKING BOLT IS SECURED BEFORE CONTINUING*

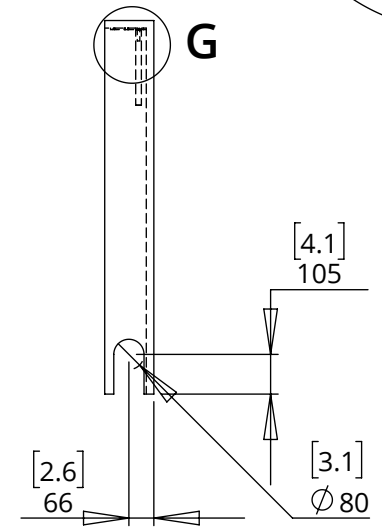


5. Install Box Plate onto Screen Box.

Ensure Box Plate is positioned centrally, with back edge of plate against inside of Screen Box as shown in DETAIL G .



DETAIL G
SCALE 1 : 5

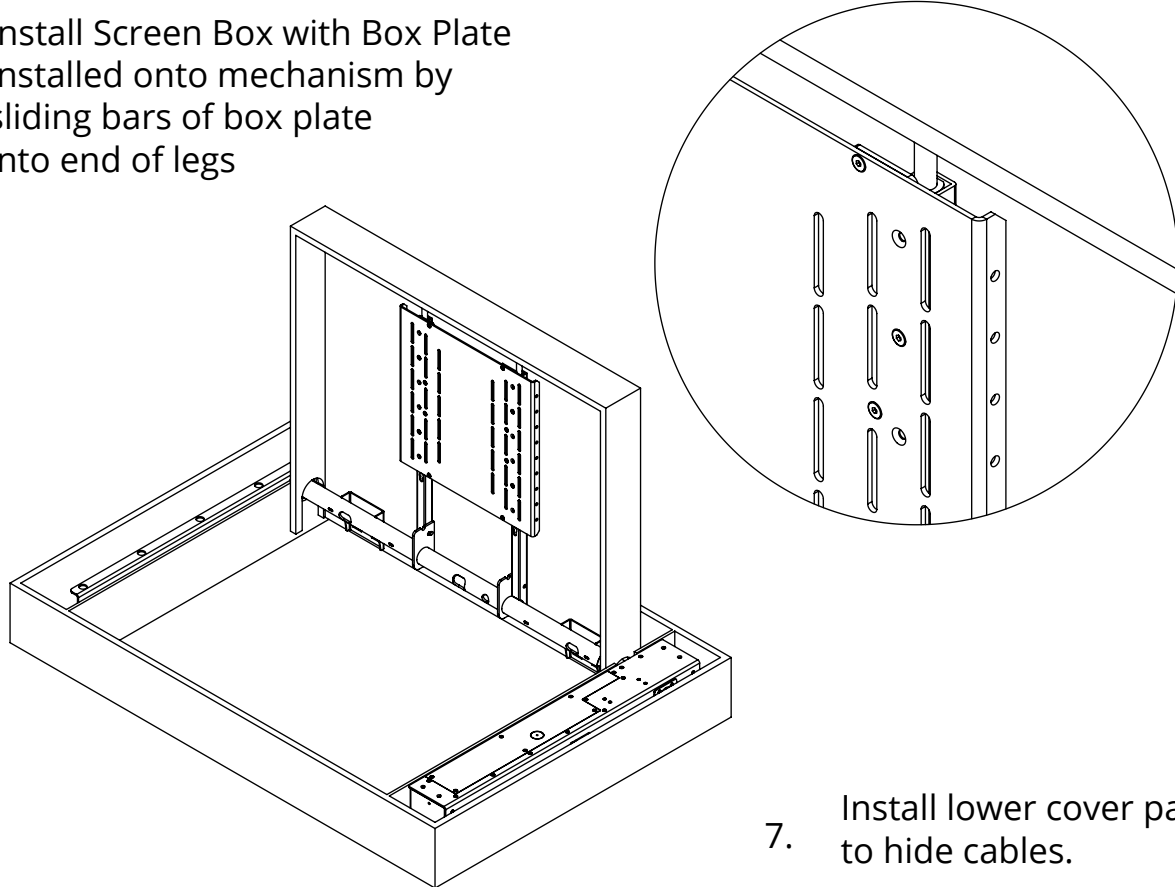


HU4

HINGE UP MECHANISM

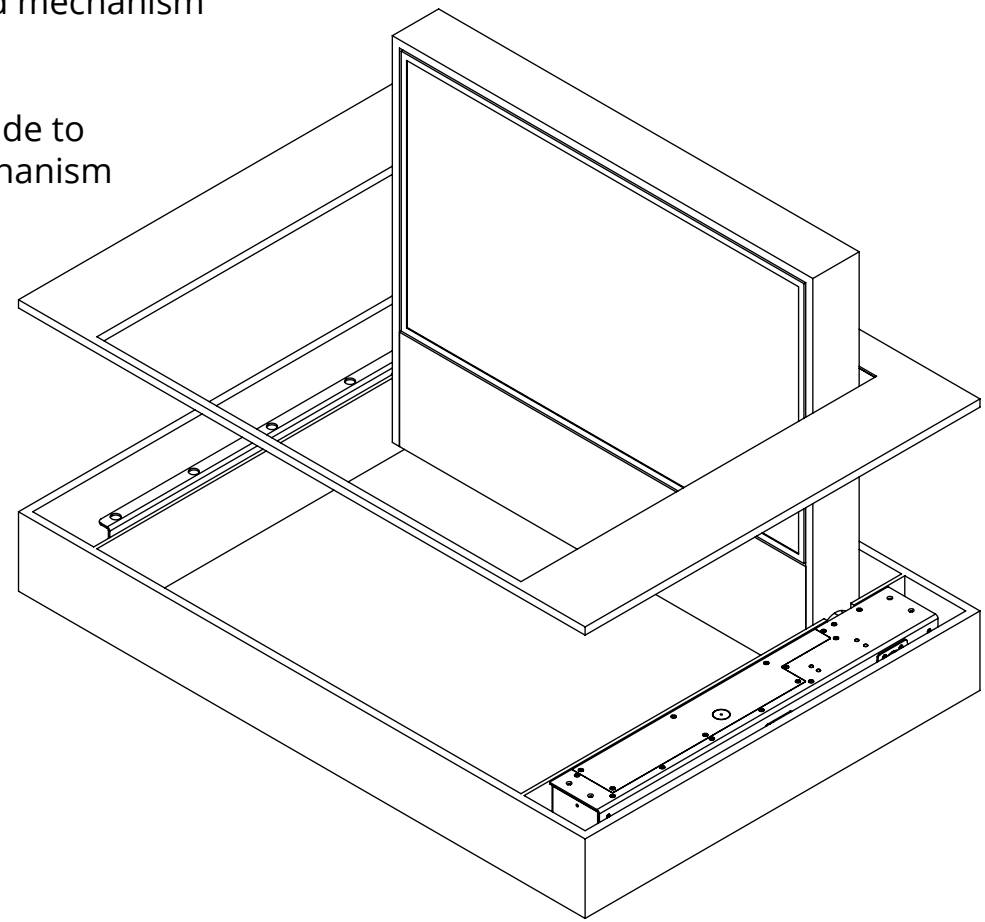
INSTALLATION - Continued

6. Install Screen Box with Box Plate installed onto mechanism by sliding bars of box plate into end of legs



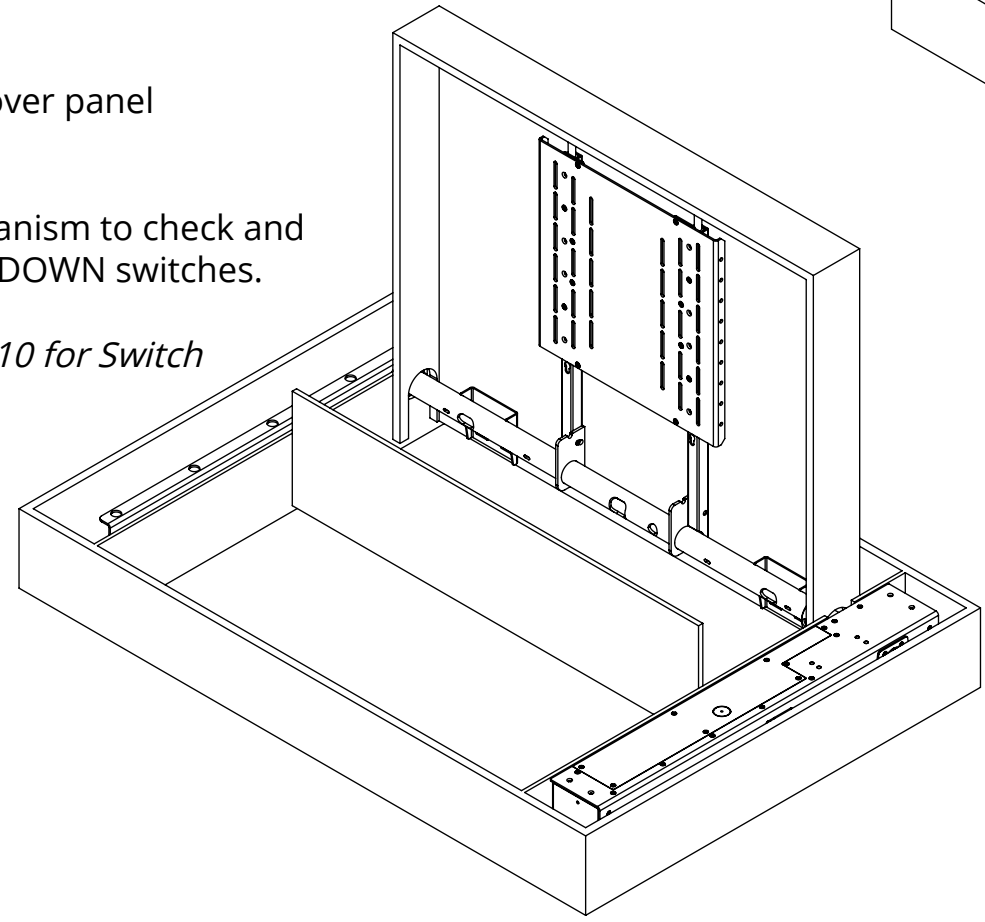
8. Install removable Top Surrounding Panel temporarily and close mechanism to check all panel work and mechanism positions.

With all adjustments made to positioning, secure mechanism and panels in place.



7. Install lower cover panel to hide cables.
- Operate mechanism to check and adjust UP and DOWN switches.

See Sheet 9 & 10 for Switch Adjustment

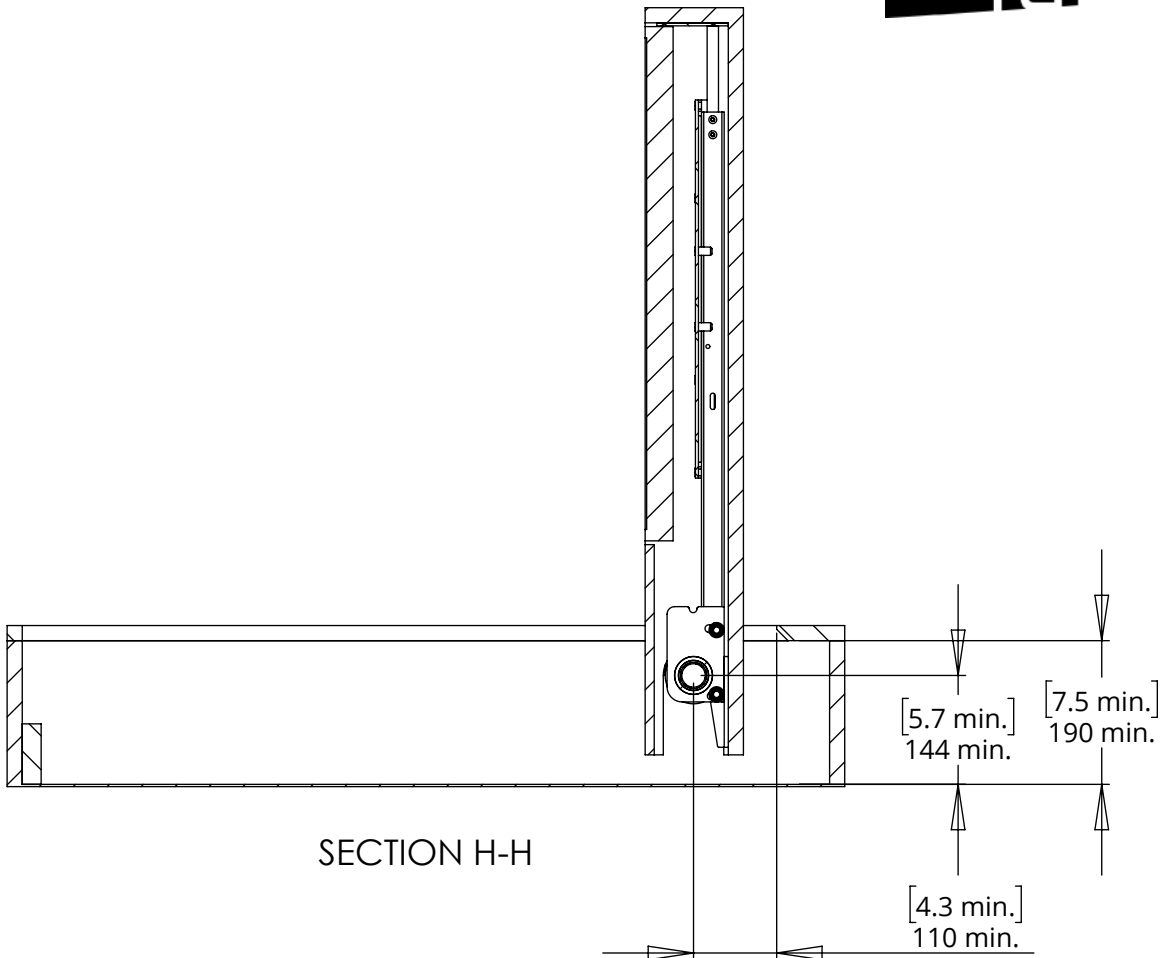
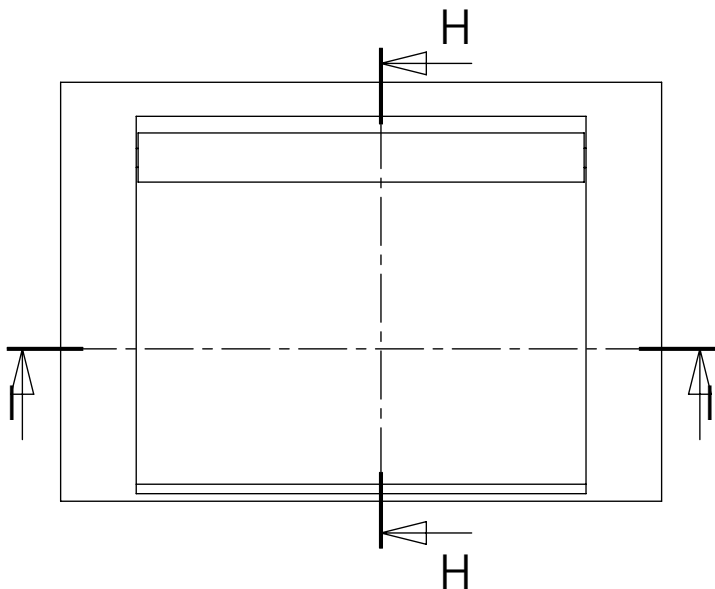


HU4

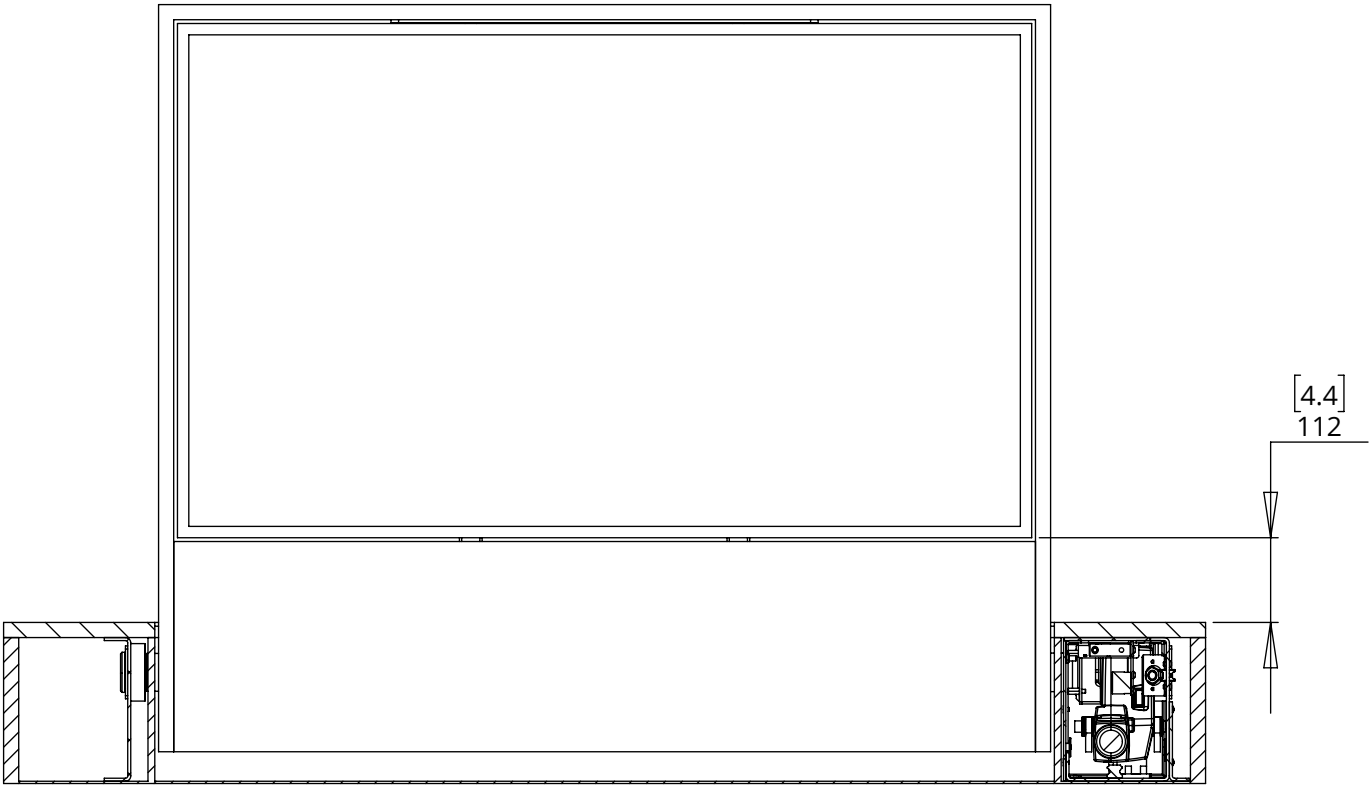
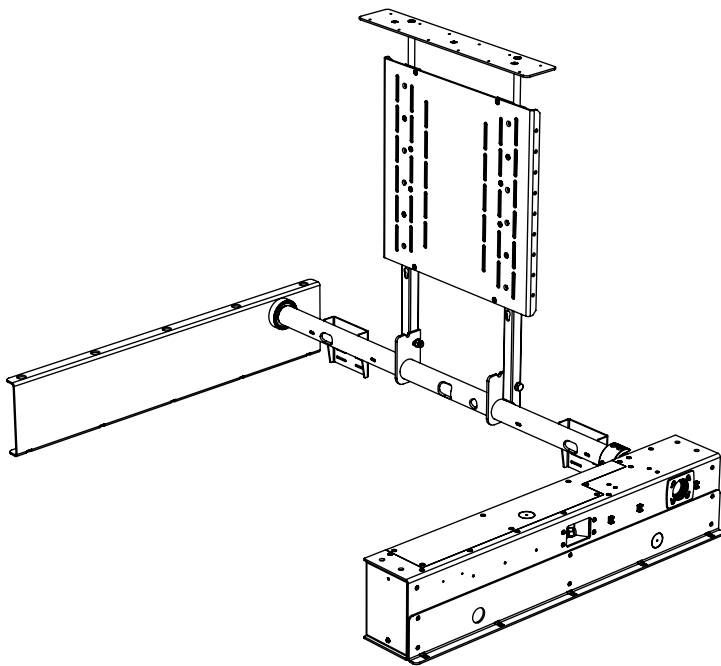
HINGE UP MECHANISM



MECHANISM DIMENSIONS



SECTION H-H



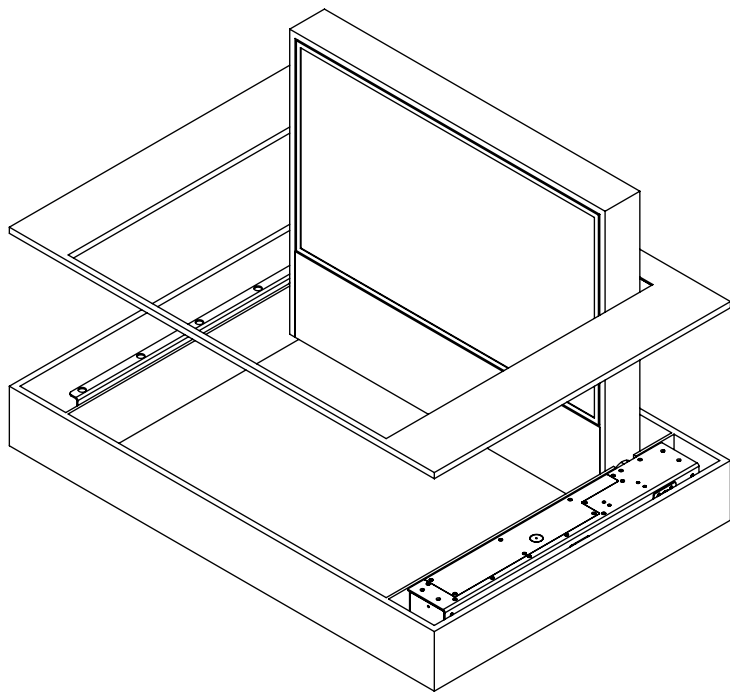
SECTION I-I

HU4

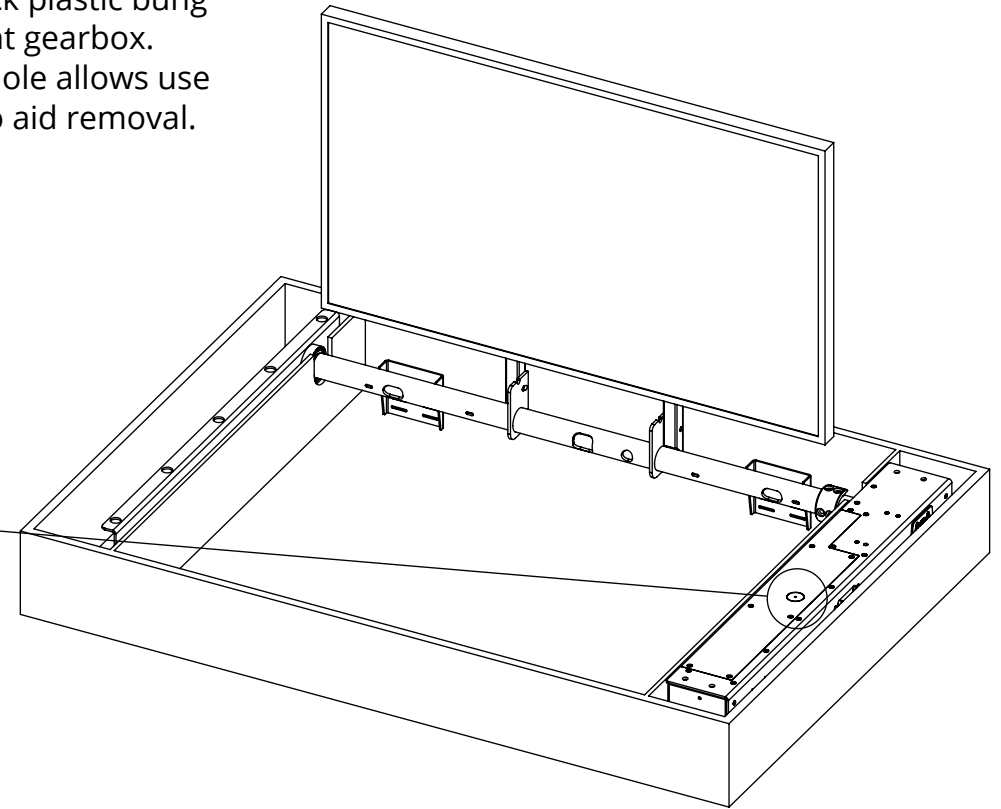
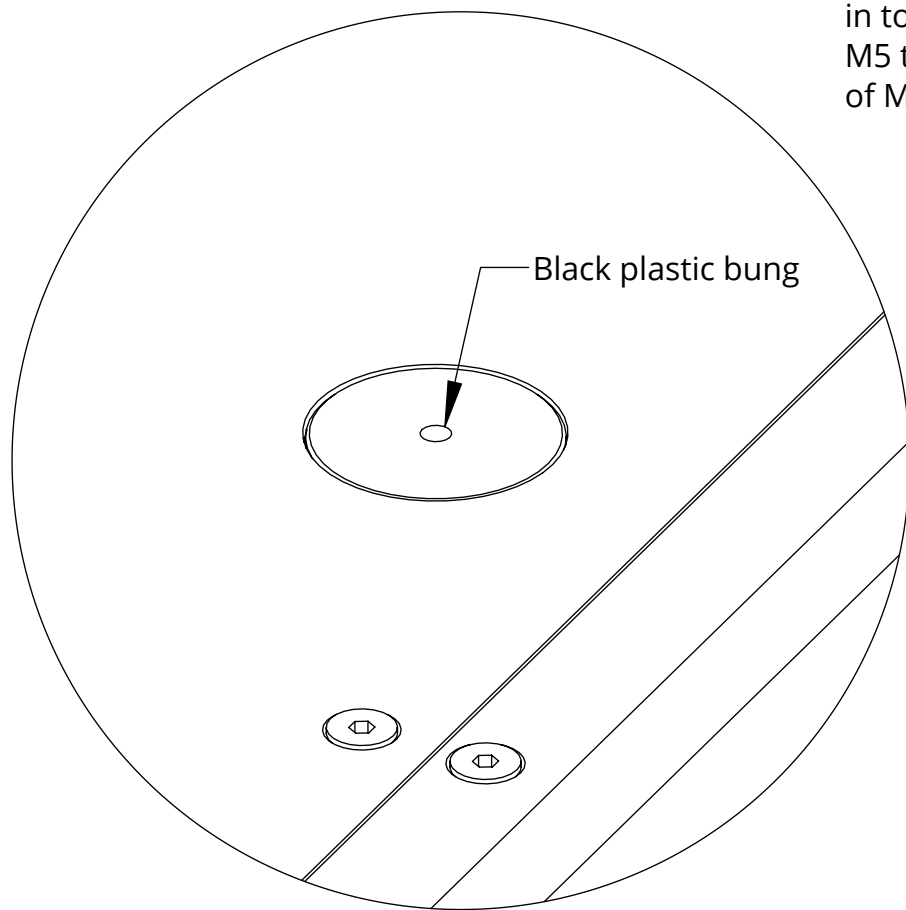
HINGE UP MECHANISM

DOWN SWITCH ADJUSTMENT

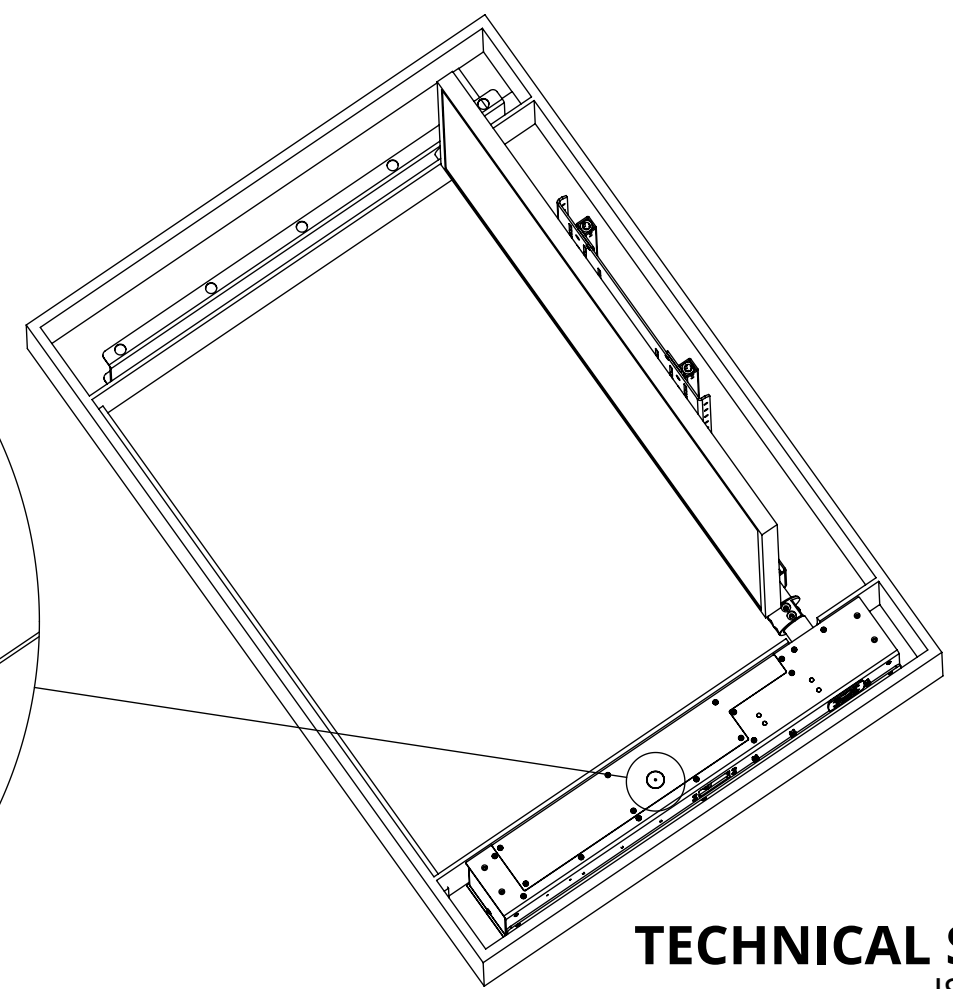
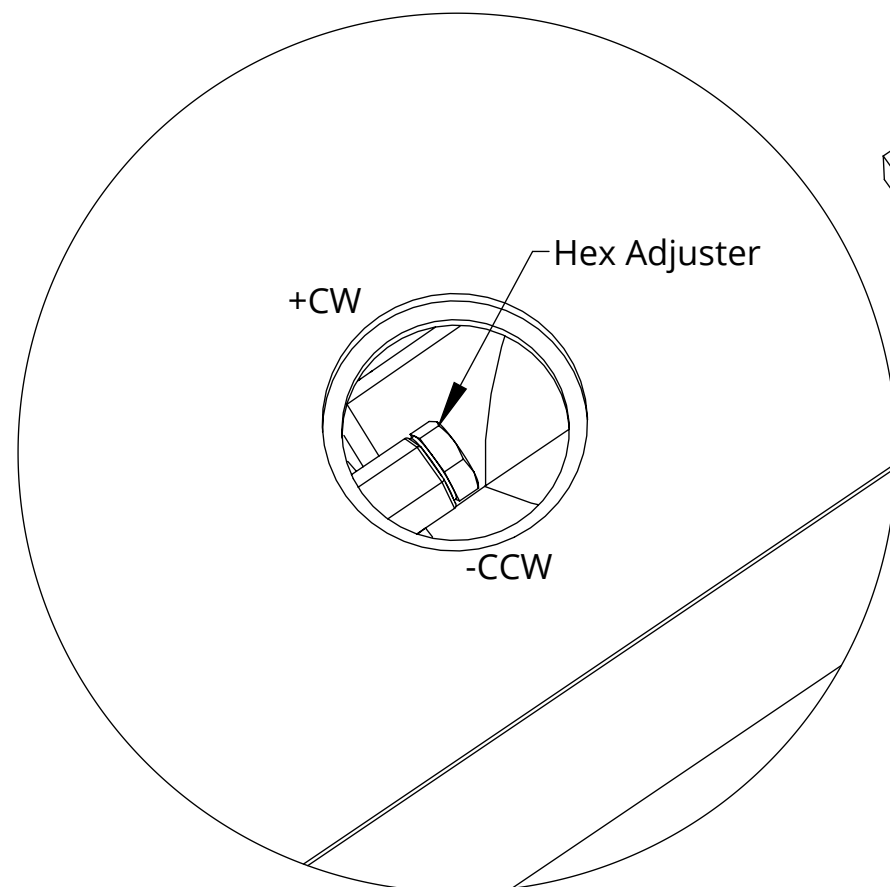
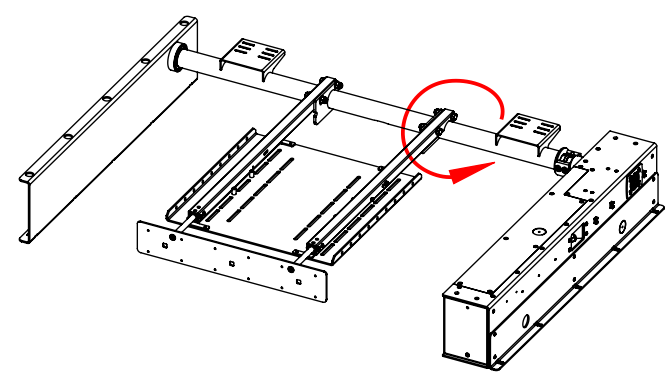
1. Remove top panel to access top of mechanism.



2. Remove black plastic bung in top of right gearbox. M5 tapped hole allows use of M5 bolt to aid removal.



Rotating the Hex Adjuster CLOCKWISE will trim the down position to further close the mechanism

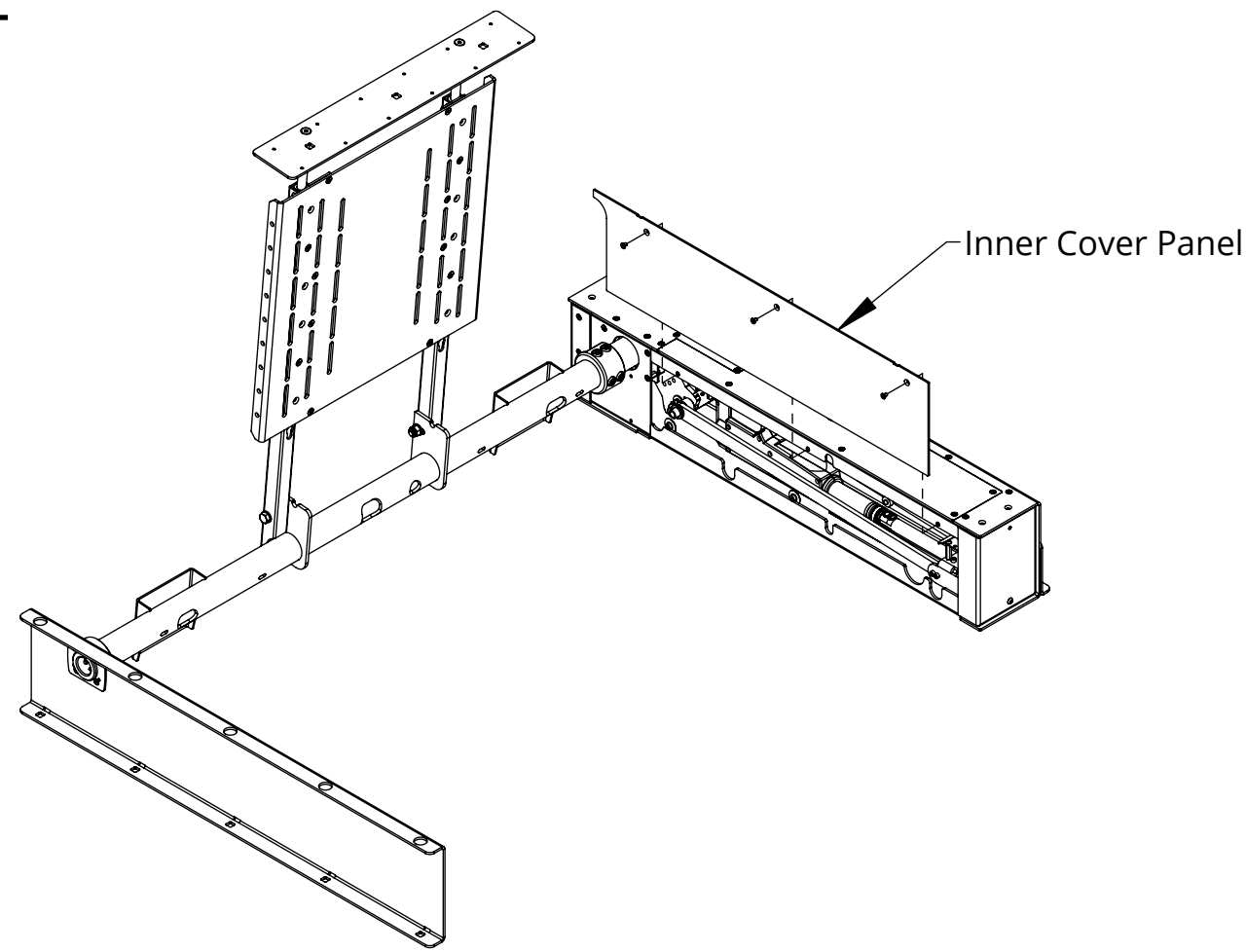


HU4

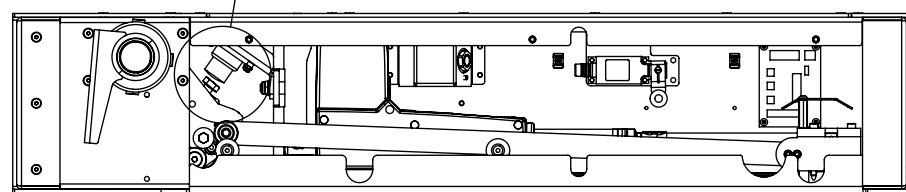
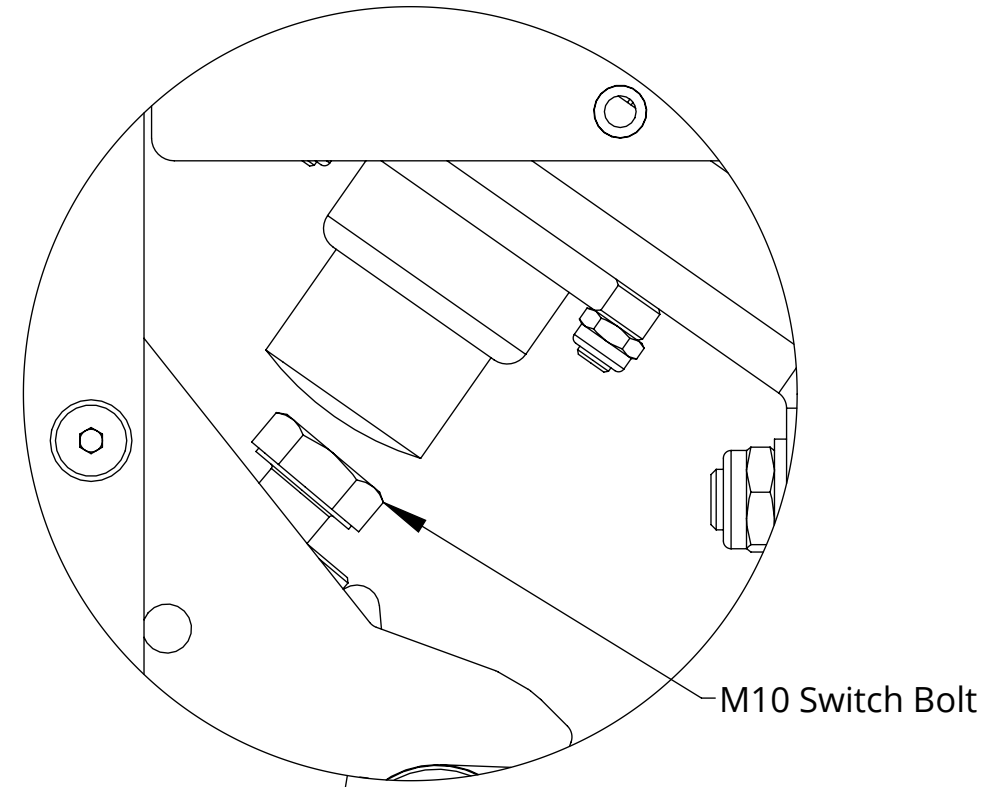
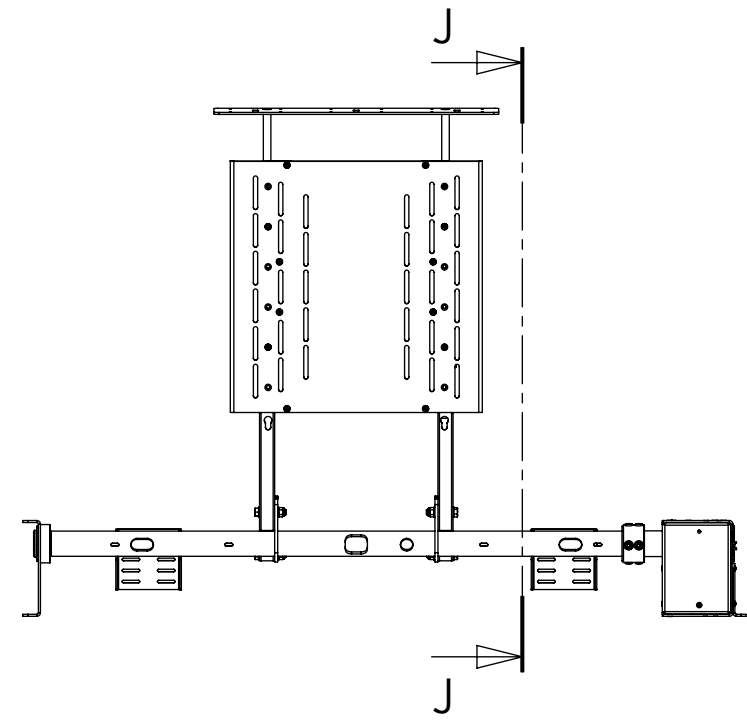
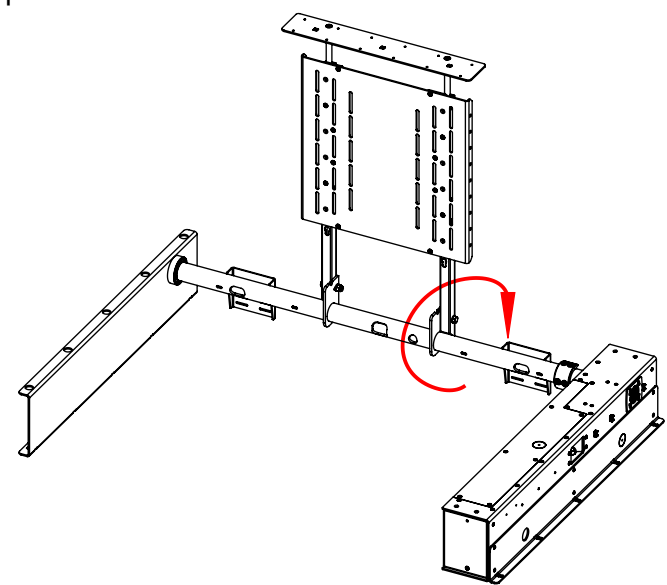
HINGE UP MECHANISM

UP SWITCH ADJUSTMENT

- 1. Remove the Inner cover panel secured by 3 x M5 X 12mm CSK Bolts
- 2. Send the mechanism IN approx. 5° to release the up switch.
- 3. M10 Switch Bolt can be adjusted to fine tune UP position.



Rotating the Switch Bolt CLOCKWISE will trim the up position to further open the mechanism



SECTION J-J
SCALE 1 : 8